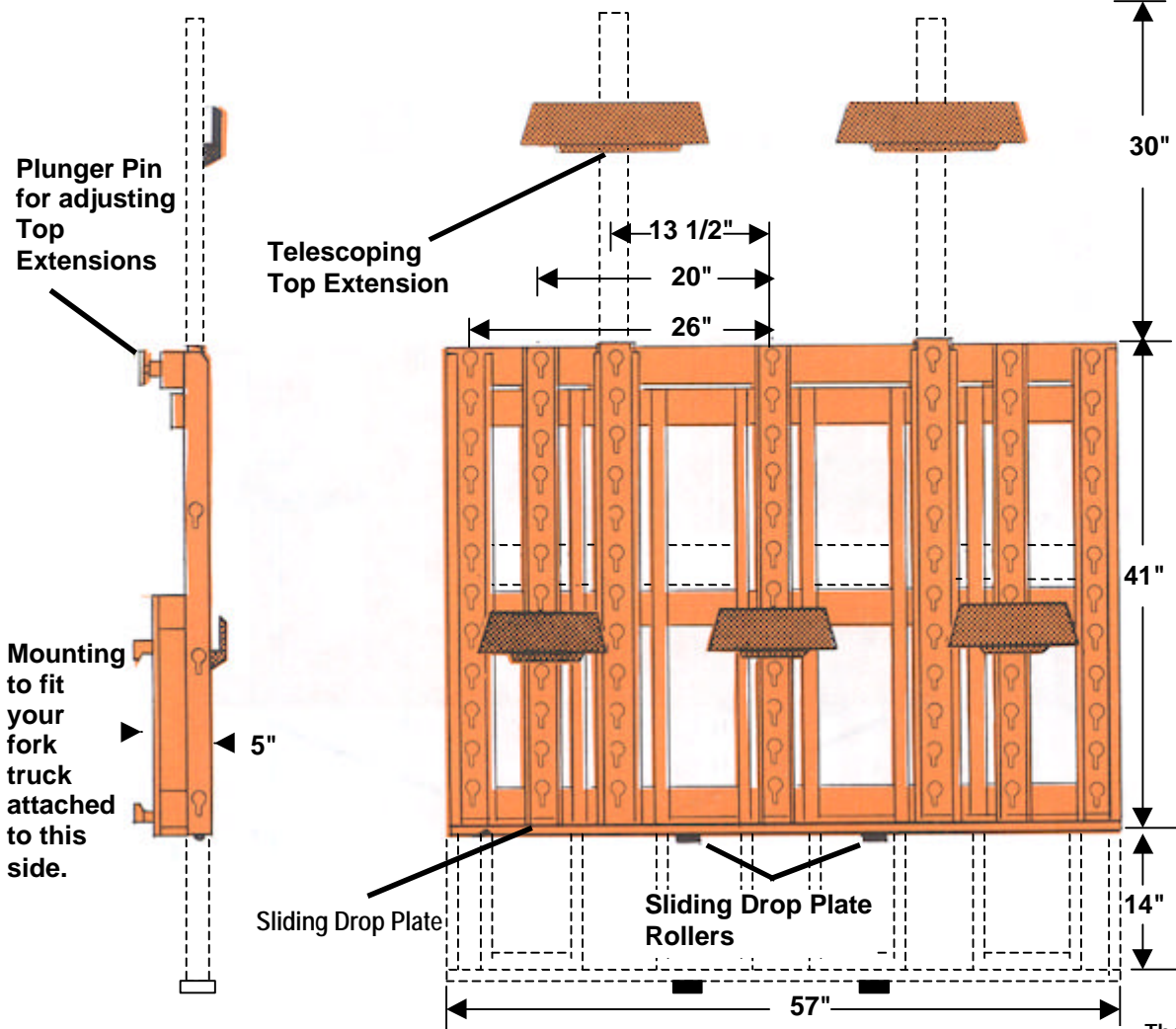




# MODEL 4057

(Main Frame Part No. MF-405)

## DOUBLE OR TRIPLE



The Model 4057 is designed for factories or warehouses. It can be used for high stacking, shipping or receiving. The low over-all height makes it possible to load or unload cartons stacked to within 1" of the top, in railcars or high-way trailers. The "Telescoping Top Extension" is for handling tall cartons.

The lifting blades in the illustration at the left are positioned to handle "two wide" in the high position and "three wide" in the low position.

Folding Forks Are Not Available With This Unit.

These are some of the combinations that can be handled with Model 4057.

